

## WHAT TO EXPECT WITH OUR INSTALLATIONS

We are glad you've taken the time to reach out to improve your safety. PowerSafe is committed to total employee safety focused on engineered solutions through the collaborative team efforts between PowerSafe and you. Below is a quick outline of the process you can expect with your requested installation.

### PREPARATION

- A pre-install visit by our Operations Manager to perform a post review to verify dimensional fit to 90% as a goal, and machine accessibility. This is the opportunity for the **final input** from Safety, Maintenance, and Production reviewing the original scope.
- If designs need to change from the original scope of work, this will be captured in the post review, then calculated as scope creep and presented before sending the project to production.

### SIGN-OFF APPROVAL

- Once the designs and PowerPoint are updated, we will send for final approval and a sign-off.
- Once we receive a sign-off, we will begin processing the order and our Operations Manager will reach out to schedule the installation.
- Once the order is complete, we will prepare the job trailer with inventory, tools, and load & secure the project.
- If the project is too large for the trailer, we will ship the project to your facility prior to installation.

### INSTALL PROCESS

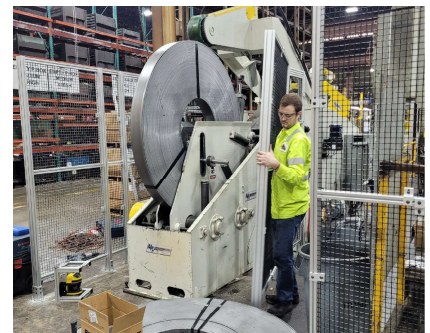
- Our crew will show up, perform any required safety training, stage trailer in your parking lot, put on PPE, setup a designated work area in your facility, perform a walkthrough of the machines, and get ready for installation.
- The crew will consist of a Site Supervisor and Field Installers. The Operations Manager will be available virtually for any support to the crew.
- The trailer may need to be staged at your facility for the duration of the installation, which can be discussed with the Operations Manager.
- Install the machine guarding and perform field-ft to close any gaps taking the guard from 90 to 100% dimensionally **before requested changes are made**.
- Any machines not down ready for installation or time delays in decision making, may incur additional costs for scope creep.

### POST-INSTALL REVIEW

- Review the machine guarding with the team comparing against original scope of work. Discuss any potential changes and/or upgrades.
- The Site Supervisor will discuss changes any potential scope creep with the Operations Manager to determine a need for upgrade charges or not.
- Completing the guard install prior to reviewing for any scope creep is critical to the timeline agreed upon for machine downtime and length of time onsite.

### FINAL SIGN-OFF

- Once each machine guard is installed and reviewed, the Control Technicians will take over to trace for the termination point and tie the electronic safety devices in, while simultaneously the installers moving to the next machine staying ahead of the Control Techs.
- Once the scope of work has been completed, the Site Supervisor will make a final walkthrough with the team, then present a sign-off as the installation approval.
- If a job requires a return visit as part of the package or for additional scope creep, the Operations Manager will coordinate with your team. The crew will clean up, load up materials and tools, hookup trailer, and head home.



**We look forward to meeting in person to help improve your safety through best practice solutions. Please contact us prior to our visit for any pertinent changes to the direction of this plan.**

### Shawn Mantel

Sales Engineer

(260) 993-2828

shawn.matel@powersafeautomation.com

Shawn Mantel

### Kevin Platter

Operations Manager

(260) 367-1600

kevin.platter@powersafeautomation.com